



Total Solution Provider in Saw Device

SA12014AV

120.0 MHz IF SAW Filter
14.35 MHz Bandwidth
Revision 0: 22. May. 2008



- Electrical Characteristics
 - Package Dimensions
 - Testing Environment
 - Frequency Characteristics
-

SAWNICS Inc.

460 Cheonheung-ri, Seonggeo-eup, Cheonan-si, Chungcheongnam-do, 330-836 / Korea.
Tel: +82 41 550 9372 / Fax: +82 41 550 9399 / www.sawnics.com



□ Electrical Characteristics

Maximum Ratings

Parameters Description	Unit	Minimum	Typical	Maximum
Operation Temperature Range	°C	-	25	-
Storage Temperature Range	°C	-40	-	85
Maximum DC Voltage	V	-	-	10
Maximum Input Power	dBm	-	-	10
Source Impedance (single ended) ⁽¹⁾	Ω	-	50	-
Load Impedance (single ended) ⁽¹⁾	Ω	-	50	-
Package type & size	V			
Length x Width	mm ²	-	13.3 x 6.5	-
Height	mm	-	-	1.8

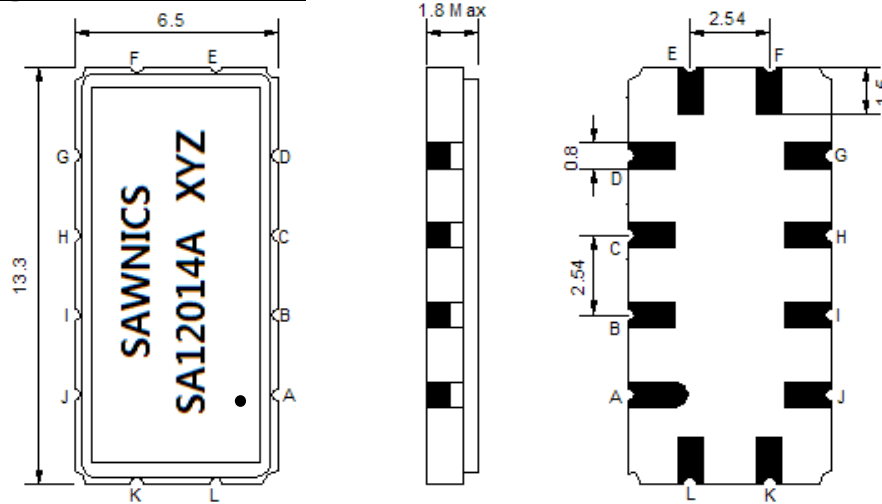
Electrical Specification

Parameters Description	Unit	Minimum	Typical	Maximum
Center Frequency (Fo)	MHz	119.85	120.00	120.15
Insertion Loss at Fo	dB	-	20.0	22.0
Group Delay Variation	nsec	-	50	100
Absolute Delay at Fo	usec	-	1.55	-
Passband Ripple Variation	dB	-	0.78	1.0
Bandwidth at -1dB	MHz	-	14.35	-
Bandwidth at -3dB	MHz	14.70	14.80	-
Bandwidth at -40dB	MHz	-	16.75	16.90
Ultimate Rejection	dB	48	54	-
Temperature Coefficient	ppm/°C	-	-72	-

Notes : (1) With Matching Network (Ref. Testing Environment Circuit as shown below).

Those impedances could be modified with different impedance values and/or structures, if necessary.

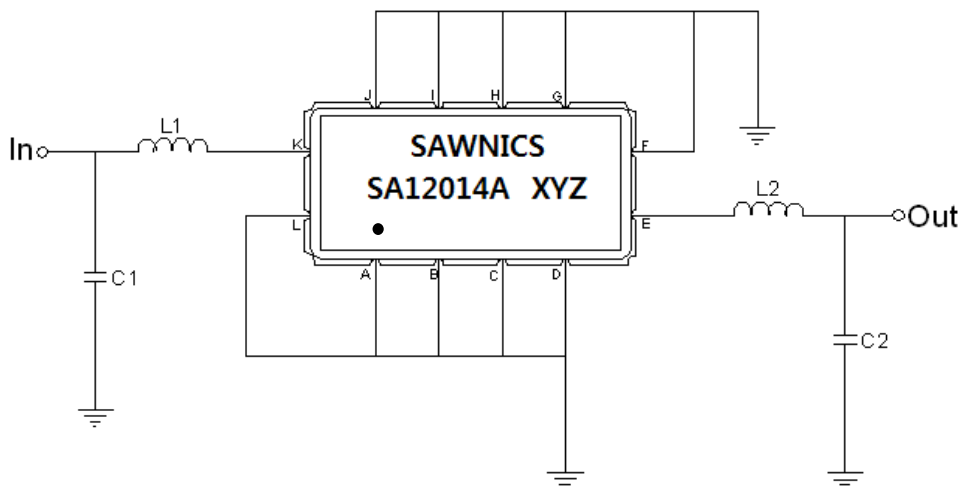
Package Dimensions



- ① SAWNICS: Brand
- ② SA12014A: Model Name
- ③ X : Date Code (Year)
- ④ Y : Date Code (Month)
- ⑤ Z : Date Code (Date)
- : Index Dot

Pin Description	
A, B, C, D, F, G, H, I, J, L	Ground
K	Input
E	Output

Testing Environment



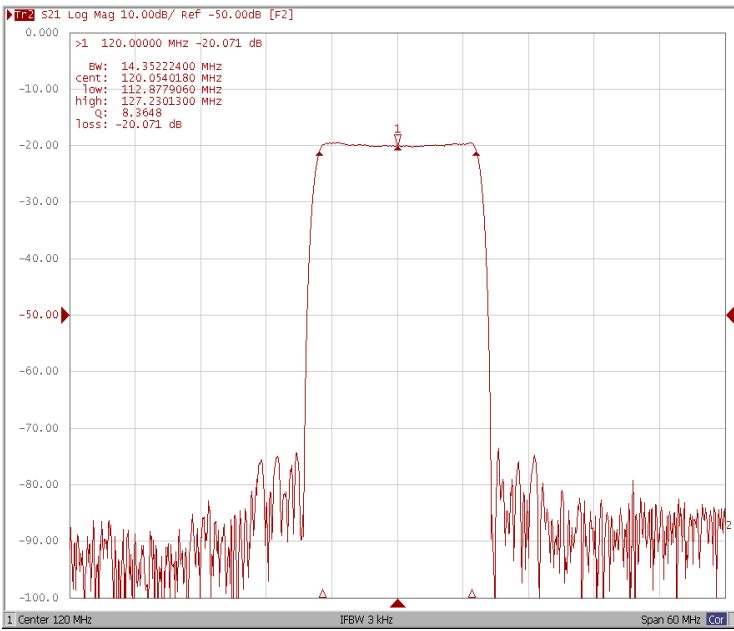
Test Fixture & Values	
Input	L1 = 22 nH , C1 = 7 pF
Output	L2 = 22 nH , C2 = 7 pF
Source/Load Impedance	50 Ω



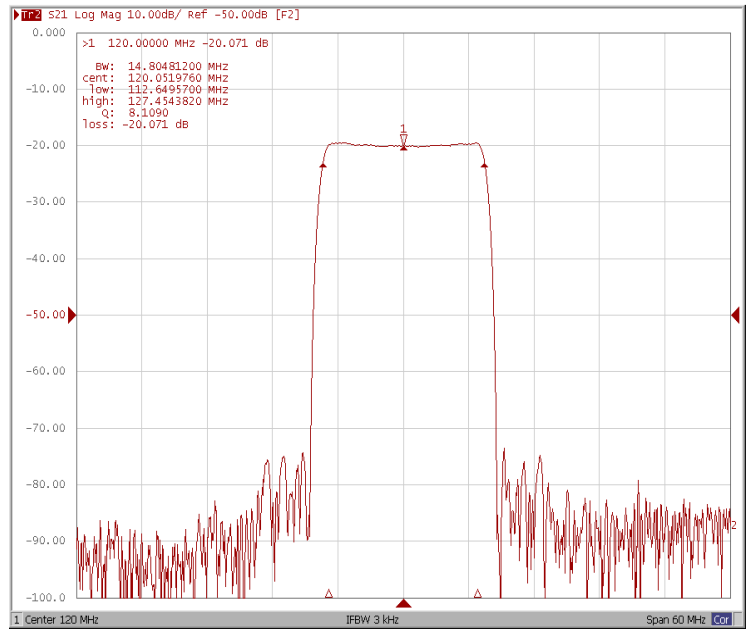
□ Frequency Characteristics

Frequency Response

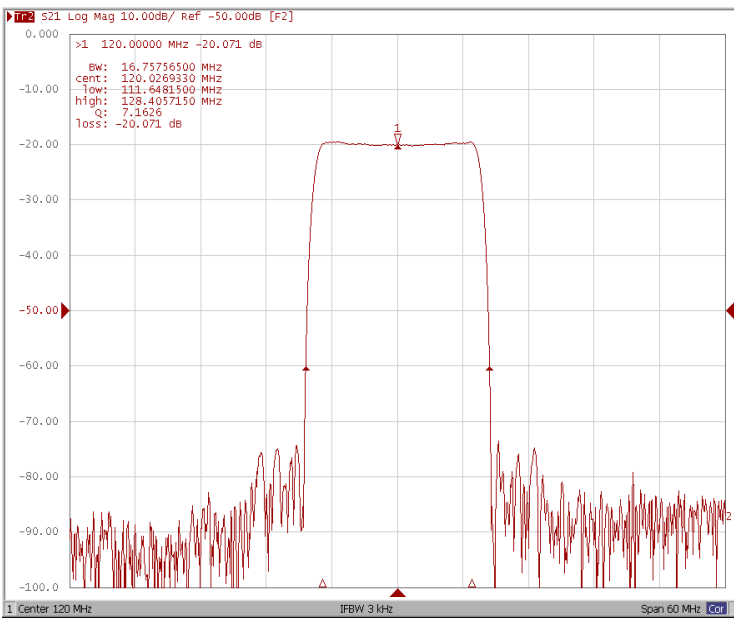
Bandwidth at -1.0 dB



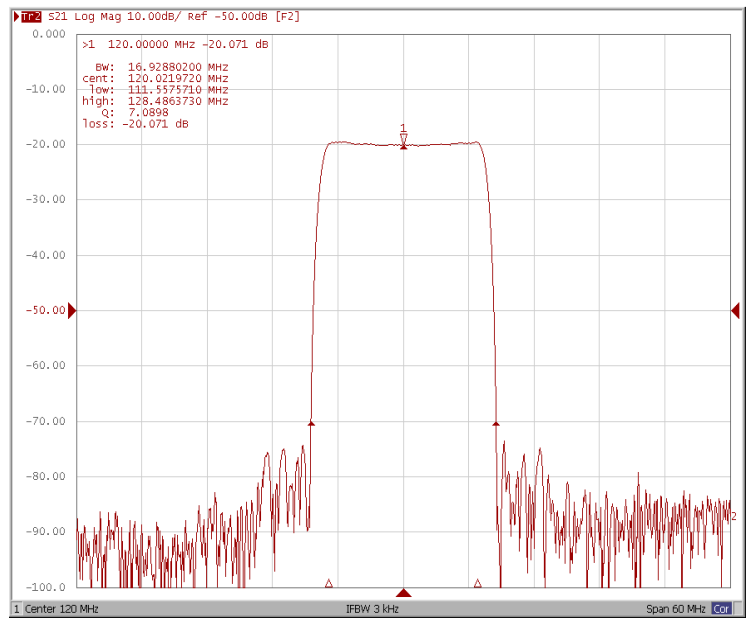
Bandwidth at -3.0 dB



Bandwidth at -40.0 dB



Bandwidth at -50.0 dB

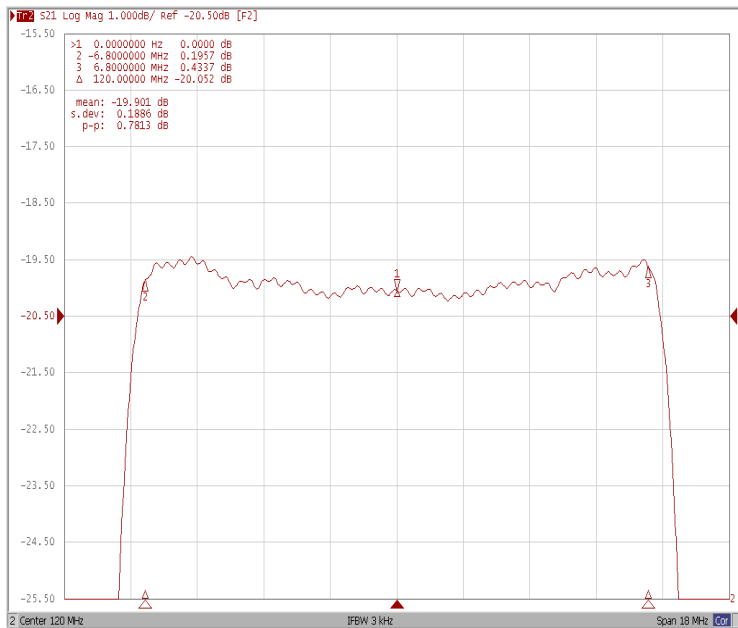




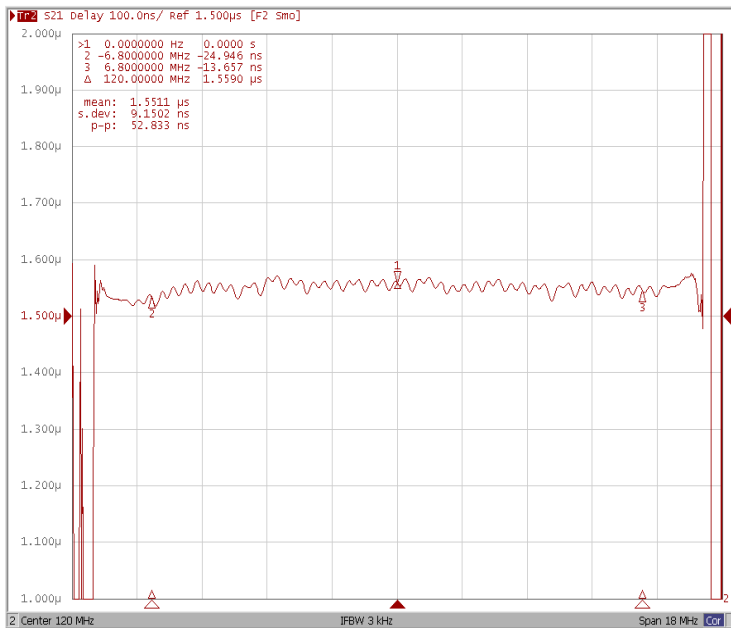
Frequency Characteristics

Frequency Response

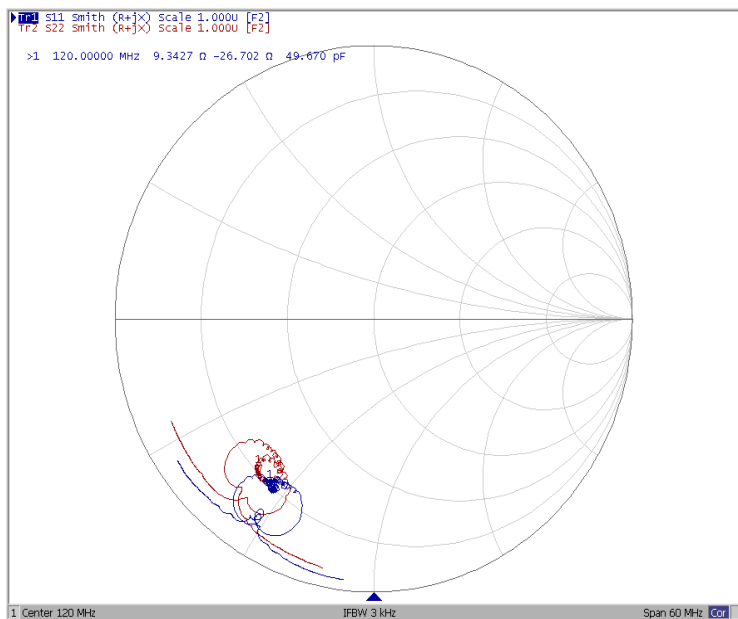
Ripple Variation Fo±6.8MHz



Group Delay Variation Fo±6.8MHz



Smith Chart



SWR

